

Split/Splitless Inlet

| Description | HP Part No. | Qty. |
|--|-------------|------|
| 1. O-rings HPM8 (10/pkg) | 5180-4181 | 1 |
| 2. Septum Nut | 18740-60835 | 1 |
| 3. Septum, 11 mm, solid, (25/pkg)* | 5181-1263 | 1 |
| 4. Top Insert Assembly (EPC) | G1544-60575 | 1 |
| (Manual Assy) | 19251-60575 | 1 |
| 5. O-ring, * .239 in. (Order No. 5180-4182, 12/pkg) | 0905-1014 | 1 |
| 6. Inlet Liner, Split Mode, Standard** | 19251-60540 | 1 |
| 7. Split Vent Flow Line (14.2 in. long x 0.125 in. id) | G1544-20620 | 1 |
| 8. Split Vent Trap Assembly*** | G1544-80550 | 1 |
| Replacement Filter Cartridge Kit (2/pkg) | G1544-80530 | — |
| 9. Swagelok Nut, 1/8 in. brass (10/pkg) Order No. | 5180-4103 | 1 |
| 10. Swagelok Back Ferrule, 1/8 in. brass (10/pkg) Order No. | 5180-4115 | 1 |
| 11. Swagelok Front Ferrule, 1/8 in. brass (10/pkg) Order No. | 5180-4109 | 1 |
| 12. Screw, M4 x 12 mm, Torx T20 (Captive) | 1390-1023 | 3 |
| 13. Inlet Weldment | G1544-80570 | 1 |
| 14. Heater/Sensor Assembly | G1544-61140 | 1 |
| 15. Screw, M4 x 8 mm, Torx T20, chromeplated | 0515-2711 | 3 |
| 16. Top Insulation | G1544-00010 | 1 |
| 17. Washer, 12/pkg | 5061-5869 | 1 |
| 18. Thermal Block | G1544-20570 | 1 |
| 19. Block Insulation | G1544-00020 | 1 |
| 20. Thermal Nut | G1544-20590 | 1 |
| 21. Lower Inlet Seal, gold plated | 18740-20885 | 1 |
| Also in stainless steel (optional) | 18740-20880 | — |
| 22. Flat Thrust Washer (Order No. 5061-5869, 12/pkg) | 2190-0464 | 1 |
| 23. Reducing Nut | 18740-20800 | 1 |
| 24. Insulation (lower) | G1544-00030 | 1 |
| 25. Insulation | 19243-00065 | 2 |
| 26. Insulation | 19243-00060 | 1 |
| 27. Bottom Insulation Cover | 19243-00070 | 1 |
| 28. Ferrules (identify by internal diameter):* | | |
| Solid (no hole) Ferrule Plug | 5181-7458 | 1 |
| Graphite Ferrule 0.5 mm id (10/pkg) | 5080-8853 | |
| Graphite Ferrule 1.0 mm id (10/pkg) | 5080-8773 | |
| 29. Column Nut* (Order No. 5181-8830, 2/pkg) | 18740-20870 | 1 |
| 30. Screw, M3 x 16 mm, Torx T10 | 1390-1022 | 1 |
| 31. Plastic Fitting, HPM8, (10/pkg) | 5181-3394 | 1 |

* Also refer to the *Analytical Columns and Supplies Catalog*.

** See the Column Liners table for more liners, or the *Analytical Columns and Supplies Catalog*.

*** Order the Replacement Split Vent Trap kit, HP part no. G1544-60610, to replace the Split Vent Trap Assembly, HP part no. G1544-80500.

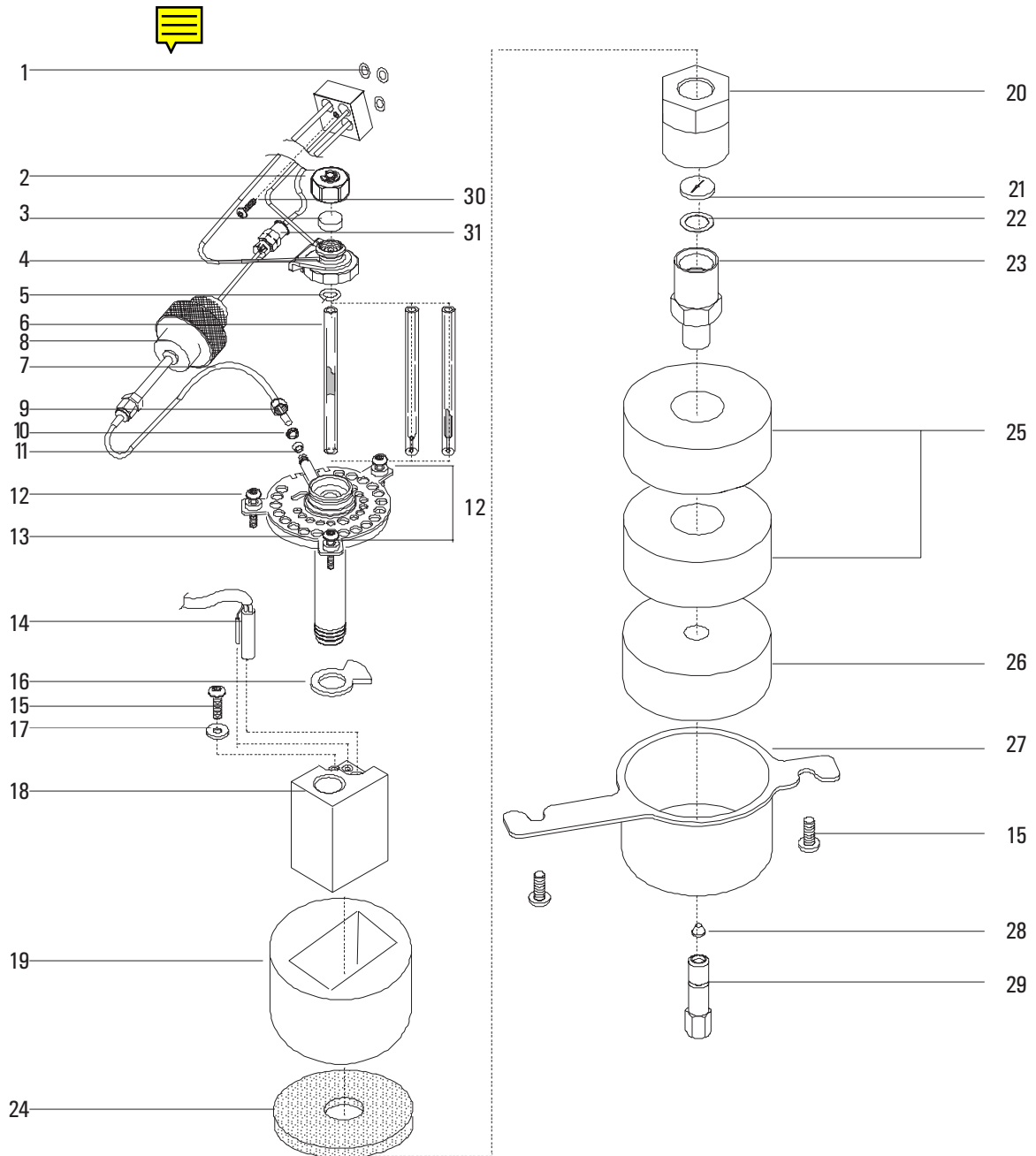


Figure 1310-1 Split/Splitless Inlet